

Science-Faith Synergy: Glorifying God and Serving Humanity



*“Wisdom is supreme; therefore get wisdom.
Though it cost all you have, get understanding.”*

Proverbs 4:7, NIV



July 29–August 1, 2011

North Central College
Naperville, IL

Hosted jointly by Wheaton College

Plenary Speakers



Steven Bouma-Prediger is Professor of Religion and Chair of the Religion Department at Hope College, Holland, MI, and he also directs and teaches in the Environmental Studies Program. His book *For the Beauty of the Earth* (Baker Academic, 2001) won an “Award of Merit” from *Christianity Today* in the magazine’s “2002 Book Awards” program. The second edition was released in April 2010. Steven will be speaking on “One Example of Science-Faith Synergy: How We Can Glorify God and Serve Humanity by Caring for the Earth”



Dorothy Chappell is Dean of Natural and Social Sciences at Wheaton College, IL. At Wheaton since 1977 in various roles, she spearheaded the building of the \$62 million science center that was awarded the Leed Gold Certification on Oct. 6, 2010. Dorothy co-edited with E. David Cook, *Not Just Science: Questions Where Christian Faith and Natural Science Intersect* (Zondervan, 2005). Her talk is titled, “Challenges, Changes and Chalice in the Natural Sciences.”



Katharine Hayhoe is a climate scientist and professor of Geosciences at Texas Tech University. As an expert reviewer for the Nobel Peace Prize-winning IPCC and author of *A Climate for Change: Global Warming Facts for Faith-Based Decisions* (with Andrew Farley, Hachette/FaithWords, 2009), she is dedicated to communicating the realities of a changing climate to those who will be affected most by it. Katharine will address “Climate Change: Why Are Science and Faith in Conflict?”



William Hurlbut is a consulting professor in the Department of Neurology and Neurological Sciences, Stanford University Medical Center, CA. He served eight years on the President’s Council on Bioethics. He came to national prominence for his advocacy of Altered Nuclear Transfer (ANT), a scientific method of obtaining pluripotent stem cells without the creation and destruction of human embryos. William will speak on “Stem Cells, Embryos and Ethics: A Continuing Controversy.”



Gareth Jones is Professor of Anatomy & Structural Biology and Director of the Bioethics Centre at the University of Otago, in Dunedin, New Zealand. Recent books include *A Tangled Web: Medicine and Theology in Dialogue* (co-edited with John Elford; Peter Lang, 2009); and *A Glass Darkly: Medicine and Theology in Further Dialogue* (co-edited with John Elford; Peter Lang, 2010). Gareth will address “Glorifying God in a Scientific Milieu: The Contrasting Domains of Neuroscience and Reproduction.”



Mary Schweitzer is Professor of Marine, Earth, and Atmospheric Sciences at North Carolina State University and Curator of Vertebrate Paleontology at the NC Museum of Natural Sciences in Raleigh, NC. She was the first researcher to identify and isolate soft tissues from a 68 million-year-old fossil bone. Her presentation is titled “Dinosaurs under the Microscope: A New Look at Old Dinosaurs.”

Workshop Descriptions

FRIDAY, July 29, 2011, 9:00 AM–4:00 PM

WORKSHOP 1: Science and Scripture: Interpreting the Information
Terry Morrison, Leader

Scientists, as well as scholars studying Scripture, Church History, etc., have a common task: dealing with “information,” that is, the experimental data and the interpretations of the scientists and the biblical data and interpretations of the theologians. This also involves questions of critiquing the sources of the data, etc. And of course, there is the question of “The Question,” i.e., what is it you want to know/understand?

For the Christian in science, e.g., ASA members, these constitute an overlap of the foci of our lives. Can we learn from appropriate approaches in either Scripture/theology studies or philosophy of science and from theologians and science practitioners, things that will advance our work, our understanding, and our living as effective Christians?

Four scholars will address these issues. They are John Walton, www.wheaton.edu/Theology/faculty/walton; Kevin Vanhoozer, www.wheaton.edu/Theology/faculty/vanhoozer; Del Ratzsch, www.calvin.edu/academic/philosophy/faculty/ratzsch; and Denis Lamoureux, www.ualberta.ca/~dlamoure



J Walton K Vanhoozer D Ratzsch D Lamoureux

FRIDAY, July 29, 2011, 1:00 PM–4:30 PM

WORKSHOP 2: Helping Your Congregation Deal with Religion-Science Issues
George Murphy, Leader



Christians with expertise in science-related fields are called to serve God in their daily work. We'll reflect a bit on this aspect of vocation but our goal here is to help scientists use their knowledge and experience in local congregations. God can use us in several areas of a church's work to further his mission in an increasingly scientific world.

Many Christians don't see the need to deal with issues raised by scientific and technological developments, while others see them as threats. Neither attitude is healthy. We'll discuss the following ways to nurture better understanding.

Scientists can obviously contribute to the church's work in education. Leading a class on faith and science or some specialized topic could be done alone or together with other leaders. We'll discuss how to develop such classes, think about possible areas of controversy, and look at some resources. (Leading an adult forum in church, and even more a group of middle school students, is not the same as teaching a college course!)

Preachers can be uneasy about addressing scientific questions but they need to proclaim the gospel to people in a scientific world. Pastoral counselors may need awareness of medical technologies to understand decisions people are faced with. Scientists can provide encouragement, support and resources for these ministries.

Medical personnel have long been involved in church-related activities—e.g., as medical missionaries or parish nurses. Ecologists and engineers can contribute to environmental stewardship (e.g., in improving a church's energy efficiency) and thus help people to see a practical dimension of the doctrine of creation.

George Murphy, <http://home.roadrunner.com/~scitheologyglm>, will share his knowledge of these issues, drawing upon his experience as a scientist and as a parish pastor, including extensive work in adult education in congregations, and will suggest print and online resources. Workshop participants will be encouraged to reflect on their own experience and share their insights with others in the group.

Meeting Highlights

THURSDAY, July 28, 2011

- 3:00 PM Check-in registration desk opens
- 9:00 PM Check-in registration desk closes

FRIDAY, July 29, 2011

- 8:15 AM Check-in Registration Desk opens
- 9:00 AM–4:00 PM **WORKSHOP I:** Science and Scripture: Interpreting the Information
–Terry Morrison, Leader
- 1:00 PM–4:30 PM **WORKSHOP 2:** Helping Your Congregation Deal with Religion-Science
Issues –George Murphy, Leader

FIELD TRIPS

- 8:30 AM–5:30 PM ASA/Affiliation of Christian Geologists Tour
- 8:30 AM–12:00 PM Morton Arboretum
- 1:00 PM–5:30 PM Wheaton College
- 1:00 PM–5:00 PM Fermilab (closed, limit reached)

CONFERENCE

- 5:30 PM Dinner
- 7:00 PM Welcome
- 7:30 PM Plenary Session
- 9:00 PM Fellowship Mixer
- 9:30 PM Check-in registration desk closes

SATURDAY, July 30, 2011, 8:00 AM–9:00 PM

- Parallel Sessions
- Plenary Sessions
- Symposia
- ASA Business Meeting
- Student and Early Career Network Event

SUNDAY, July 31, 2011, 8:30 AM–9:00 PM

- Worship Service
- Plenary Sessions
- Parallel Sessions
- Symposia
- Poster Session

MONDAY, August 1, 2011, 8:30 AM–12 PM

- Parallel Sessions
- Symposia
- Check out by 2:00 PM

FIELD TRIP

- 2:00 PM–Midnight Yerkes Observatory

Field Trip Descriptions

FRIDAY, July 29

ASA/Affiliation of Christian Geologists Geology Field Trip

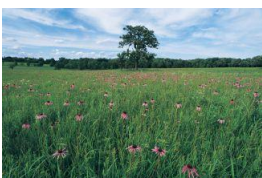


Highlights of northern Illinois geology, including stops to examine glacial landforms and Paleozoic strata, traveling from Naperville west to the Fox River valley and south to the Illinois River and back. This route traces the classic GEOLOGY 211 all-day field trip at Wheaton College. The stop at Matthiessen State Park (south of the Illinois River at Utica) includes a mildly strenuous hike through the gorge to the 45-foot waterfall over Ordovician St. Peter Sandstone. Wheaton vans leave NCC at 8:30 AM, return at 5:30 PM.

Limit: 27, box lunch and field guide included

Cost: \$45

Morton Arboretum



Founded by Joy Morton in 1923, the Morton Arboretum contains a variety of woody plants from all over the world. These plants are organized in geographical groupings, taxonomic groupings, ornamental areas, and natural associations, including tallgrass prairie, savanna, and eastern deciduous forest. Our tour will involve a narrated tram ride through the 1500-acre arboretum, and a walking tour of a selected site, as well as time at the gift shop and visitor's center. Coach bus leaves NCC at 8:30 AM, returns at 12 noon.

Limit: 35, admission included

Cost: \$45

Wheaton College



A tour of three sites of interest at Wheaton College. The Science Center at Wheaton College was opened and dedicated in 2010, and contains state-of-the-art teaching and research facilities, as well as display areas. The museum at the Billy Graham Center focuses on evangelism in America and the life of Billy Graham. The Wade Center is a research center dedicated to the study of seven British authors, and displays artifacts of several of them, including C. S. Lewis' wardrobe and J. R. R. Tolkien's writing desk. Wheaton vans leave NCC at 1:00 PM, return at 5:30 PM.

Limit: 27, donation to the Billy Graham Center Museum included

Cost: \$18

Fermilab



Our afternoon tour will start in Wilson Hall, to view the Laboratory from the 15th-floor windows and visit various displays located there. The tour moves to the Linear Accelerator building where visitors see the Cockcroft-Walton multiplier, the components in the linear accelerator gallery, and the Main Control Room. We may visit the prairie interpretative center afterwards if time and weather permit. Coach bus leaves NCC at 1:00 PM, returns at 5:00 PM.

Closed: Limit reached, tour fee included

Cost: \$35

MONDAY, August 1

Yerkes Observatory



The Yerkes Observatory, operated by the Department of Astronomy and Astrophysics at the University of Chicago, is located on the shore of Lake Geneva in Wisconsin. This 113-yr-old observatory is considered the birthplace of modern astrophysics, and it houses the largest refractor telescope in the world. After the less than two-hour drive, Dr. Kyle Cudworth, Director of Yerkes Observatory, will lead our tour of this historic facility, observing its amazing architecture. We will have dinner at a local restaurant (cost not included), and then observe the stars if the weather permits. Wheaton vans leave NCC at 2 PM, return by midnight.

Limit: 27, admission included, dinner on your own

Cost: \$30

Lodging on Campus

Accommodations are available Thursday through Monday nights. Housing is apartment/suite style, double or single bedrooms with choice of dedicated or shared bathrooms. All bathrooms are off the hallway in the suites. A dedicated bathroom is one that is designated to a particular bedroom. Linens provided include two bed sheets, one pillow case, one pillow, one blanket, one bath towel, one hand towel, and one wash cloth.

Each resident will receive three keys: a residence hall access card, a suite key, and a room key. Lost keys are \$50, immediately payable to NCC.

If you seek a roommate, please go to: www.asa3.org/ASA/education/rooms.htm.

# of Nights	Double Occupancy Dedicated Bath	Double Occupancy Shared Bath	Single Occupancy Shared Bath
5	\$210	\$170	\$260
4	\$172	\$140	\$212
3	\$134	\$110	\$164
2	\$96	\$80	\$116
1	\$58	\$50	\$68

Lodging at Area Motels/Hotels

We have a block of rooms reserved at a special conference rate at the Best Western Naperville. Call 630.505.0200 and request the ASA Conference Group Block. Other local hotel accommodations can be located using the following websites: Travelocity; Expedia; and Hotel.com

Meals on Campus

Your name badge and/or meal tickets are required for all meals. You may purchase day meal passes and/or individual meal tickets. Please note that day meal passes are less expensive than purchasing only lunch and dinner. We cannot guarantee meal day passes after **June 30**.

Fri, Sat, Sun; 3-Meal Day Pass:\$28

Mon; 2-Meal Day Pass:.....\$22

Breakfast:\$10

Lunch:\$15

Dinner:\$18

Campus Parking

Parking on campus is free, but you need a parking pass. They are available at the ASA registration desk in Wentz Concert Hall.

Travel Information

Directions to North Central College

<http://northcentralcollege.edu/content/directions-to-campus>

Airports

O'Hare International Airport: <http://www.ohare-airport.org/>

–41 min to NCC, 27.04 miles

Midway International Airport: <http://www.airport-midway.com>

–47 min to NCC, 28.08 miles

Shuttle from Airports

American Taxi: http://www.americantaxi.com/phone_numbers.asp

West Suburban Limos: <http://www.westsublimo.com> 630.668.9600

Auto Rentals

<http://www.CarRentals.com>

ASA Ride Board and Travel-and-Tourism Information

ASA has a travel page with information about getting to campus and to help you find others for shared traveling, <http://www.asa3.org/ASA/education/travel.htm>

66th ASA Annual Meeting
North Central College
30 North Brainard Street
Naperville, IL 60540