

Wildrik Botjes

PLANETARIUM







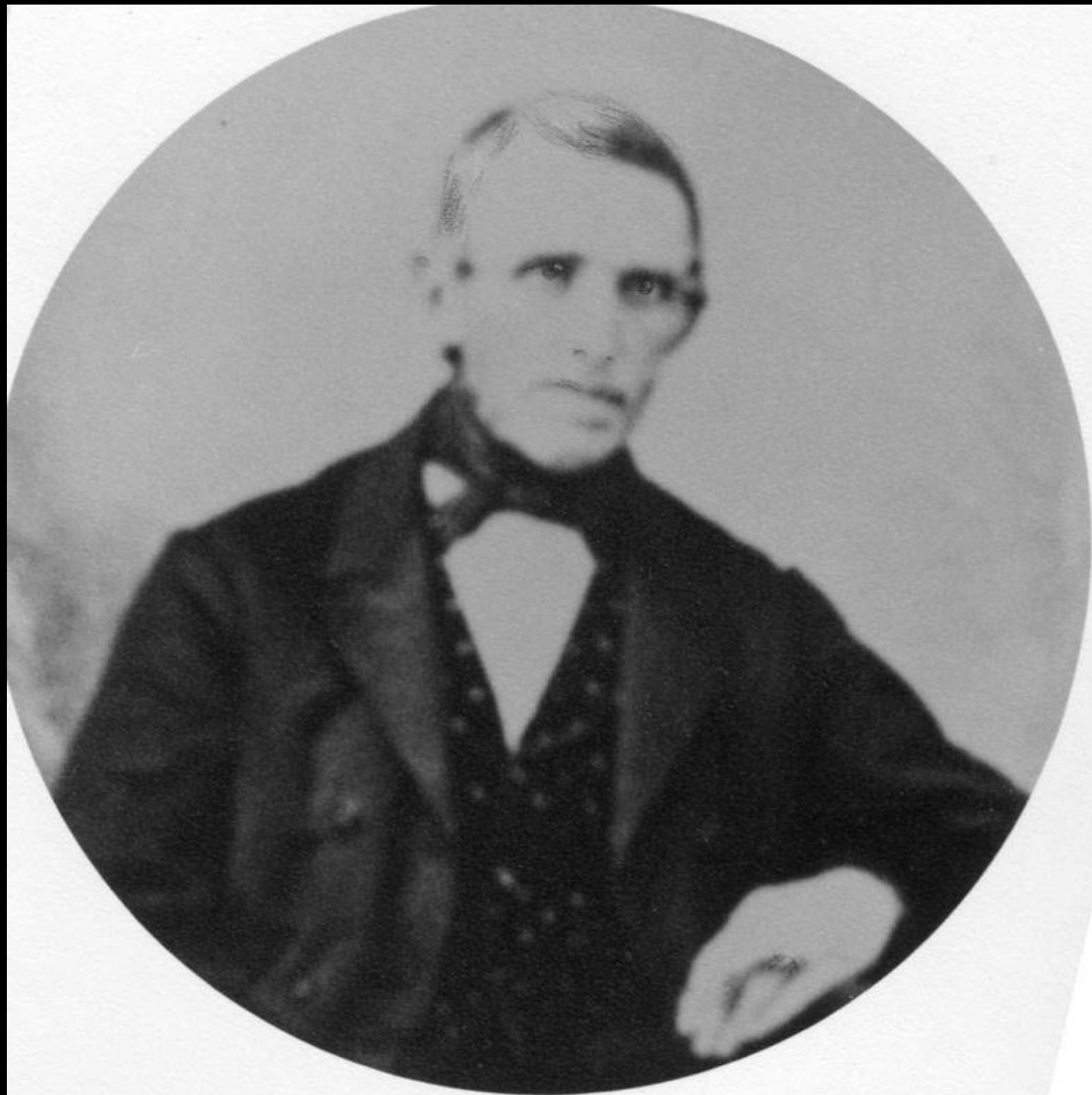
© 1972 United Feature Syndicate, Inc.





© 1972 United Feature Syndicate, Inc.



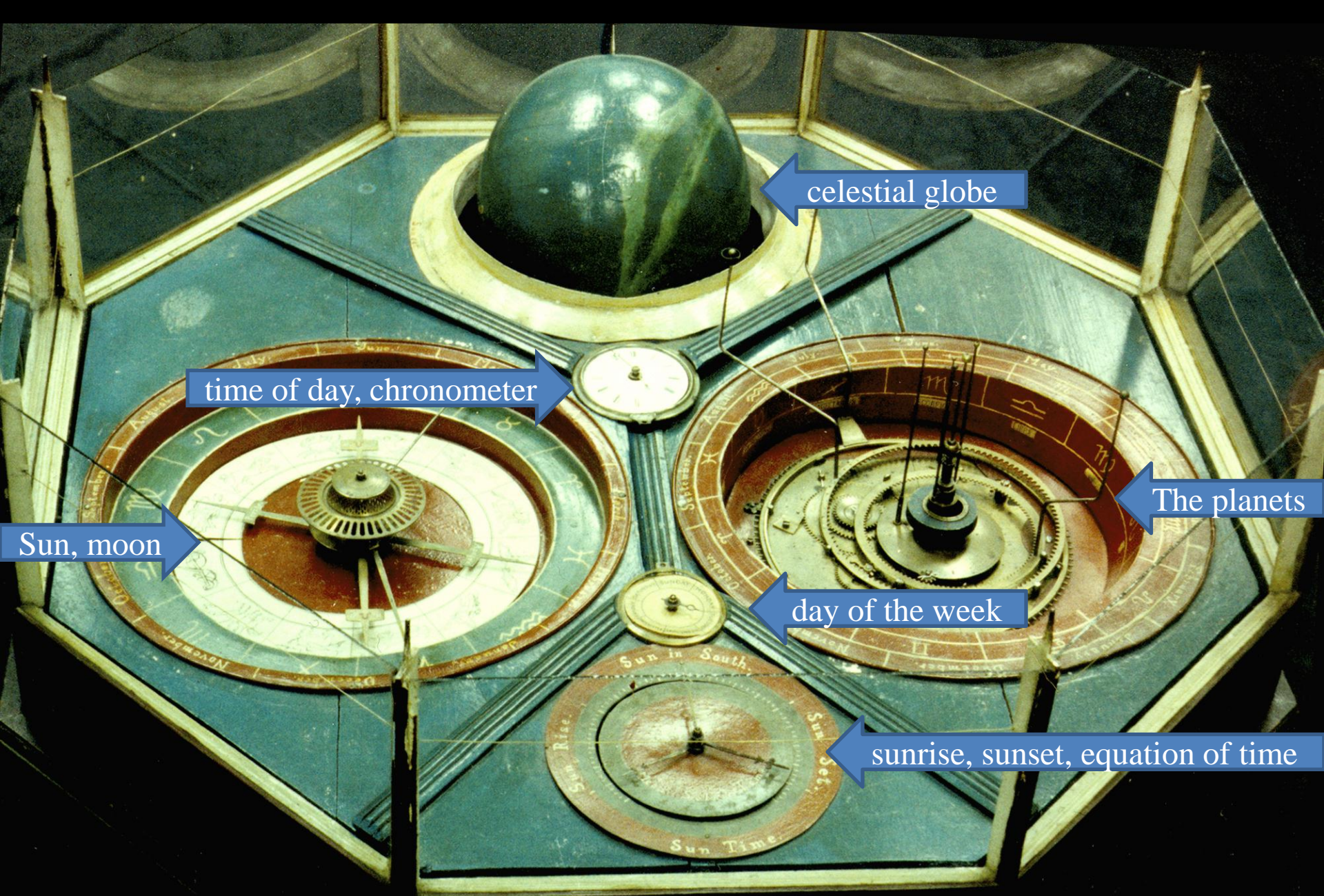




Nephew of builder, Botje H. Bos



The donors, Henry and Bertha Bos



celestial globe

time of day, chronometer

The planets

Sun, moon

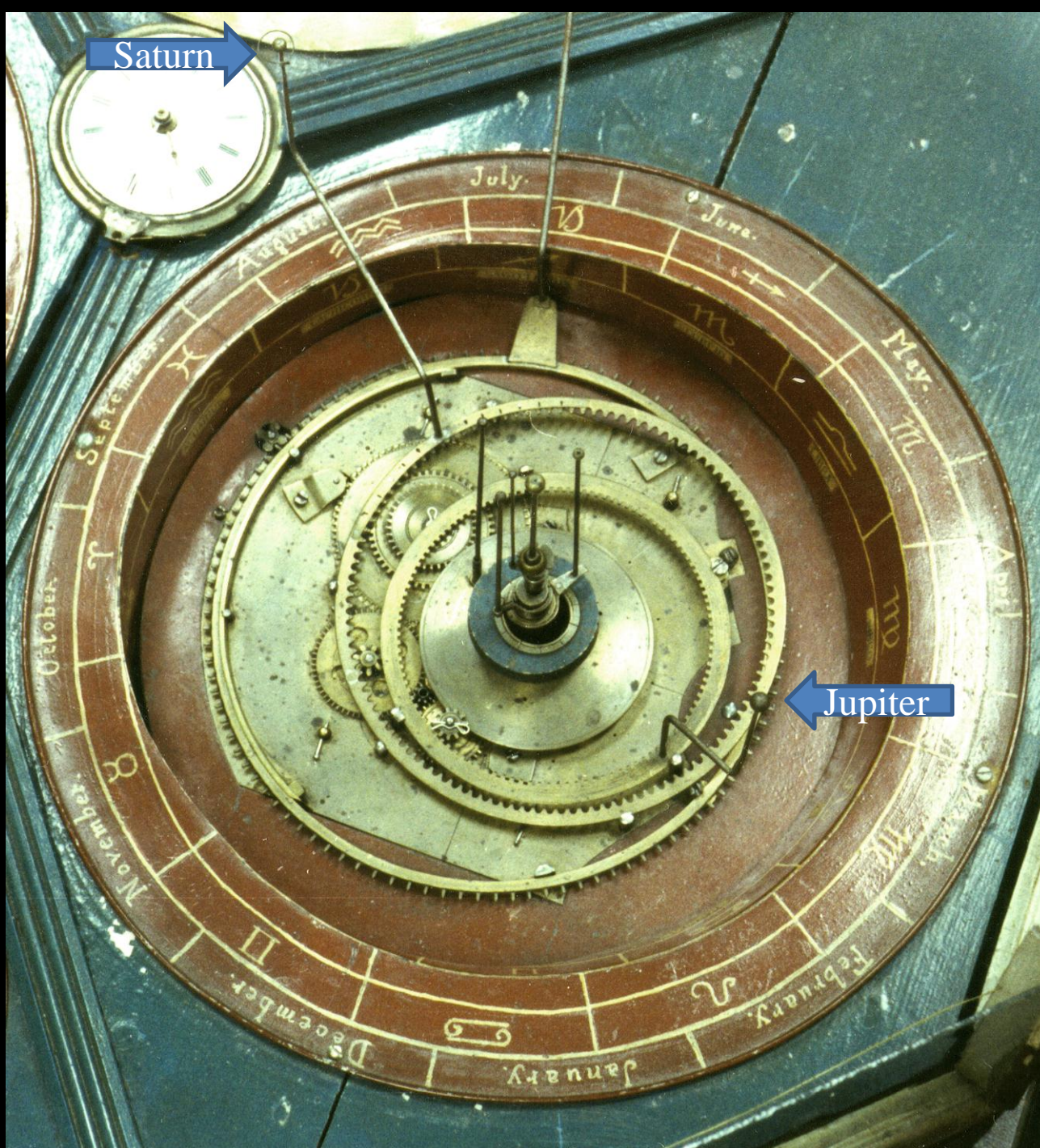
day of the week

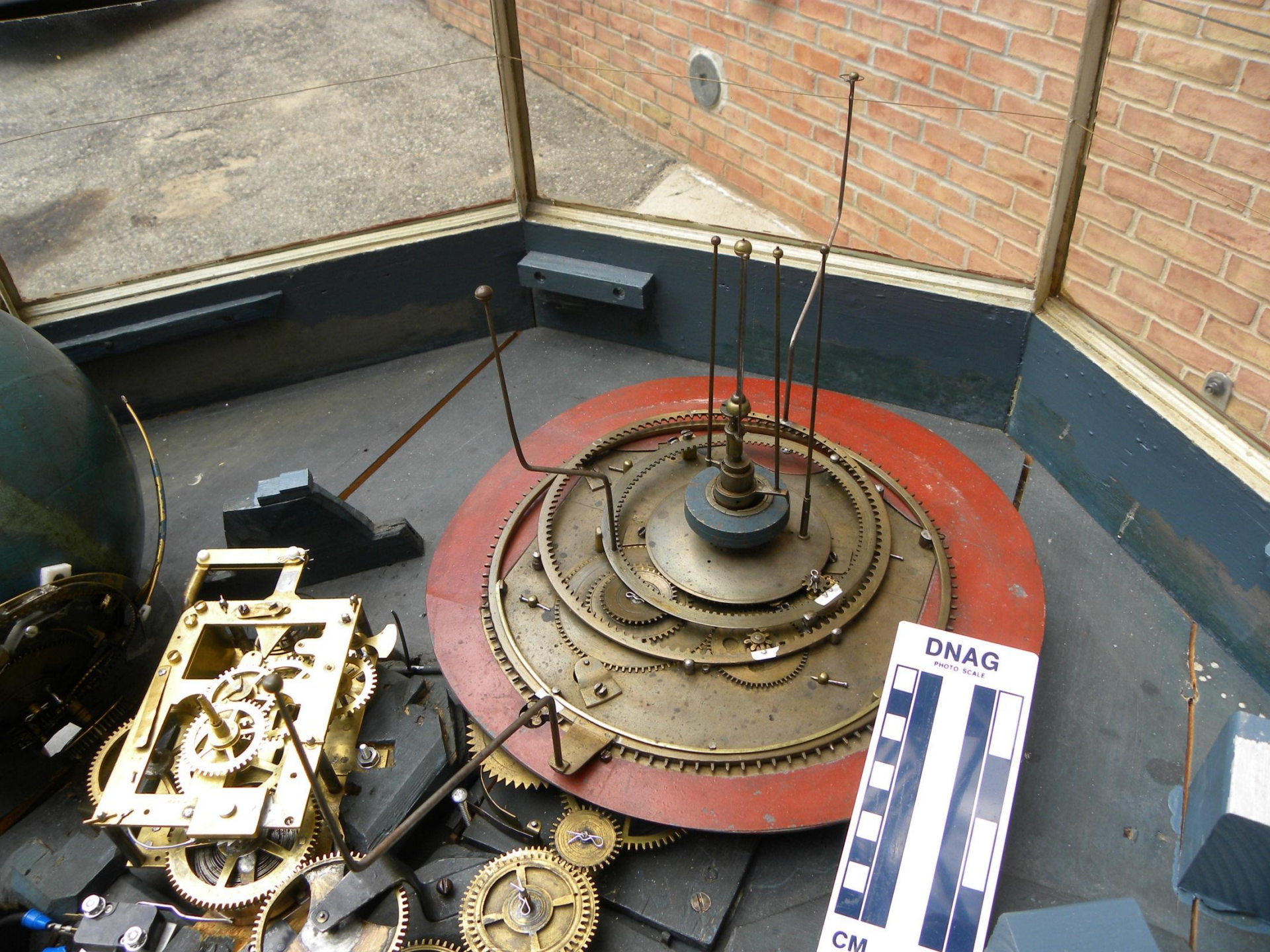
sunrise, sunset, equation of time



chronometer







DNAG
PHOTO SCALE

CM







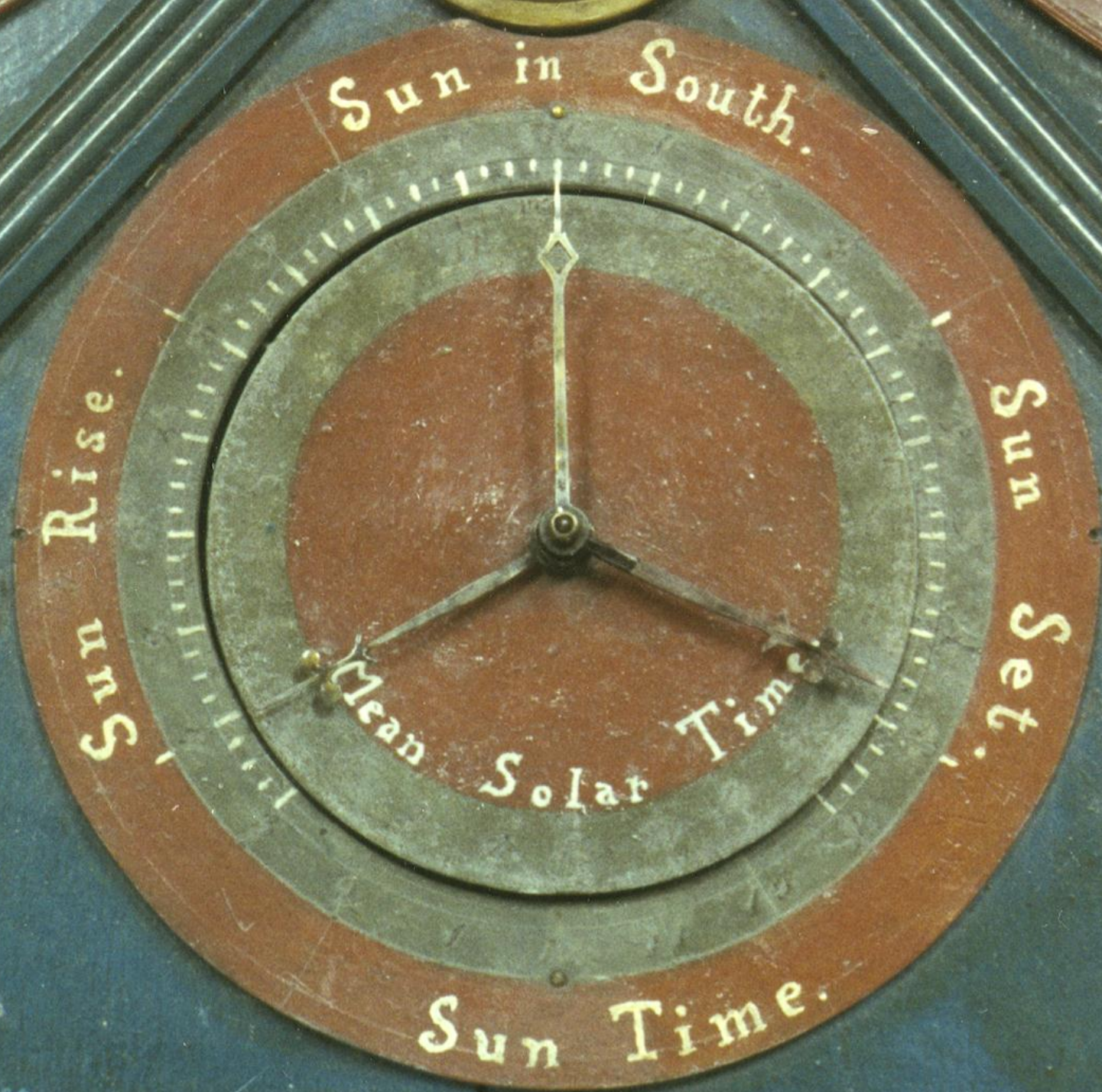
CM

IN

Allied P/N D
1248-1248

V31
1/2 A 125 VDC
1/2 A 125 VDC
5 A 125 V









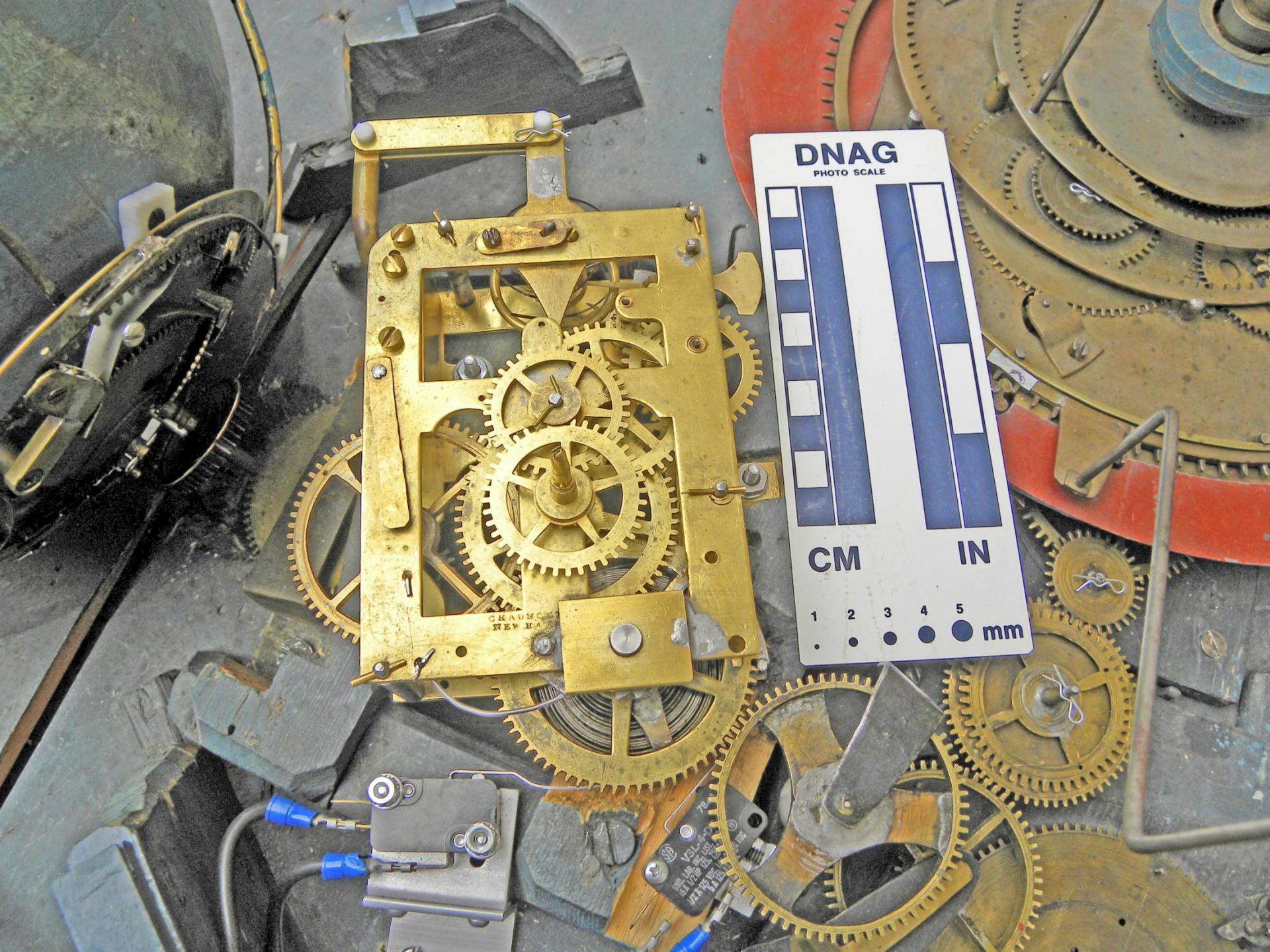
ecliptic plane

equator

DNAG
PHOTO SCALE

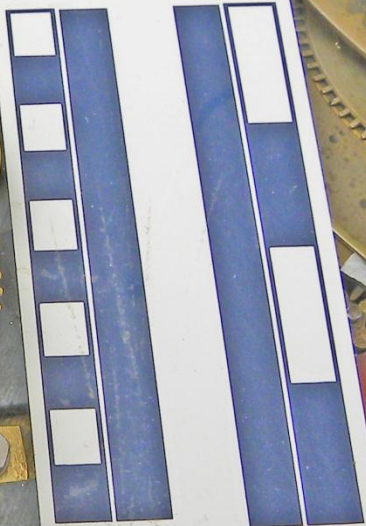
So, those are the major features of the planetarium and its functions. And there's lots more detail that we'll have to talk about some other time.

The entire mechanism is driven by the mainspring of the clock, with the speed regulated by a lever and balance-wheel escapement



DNAG

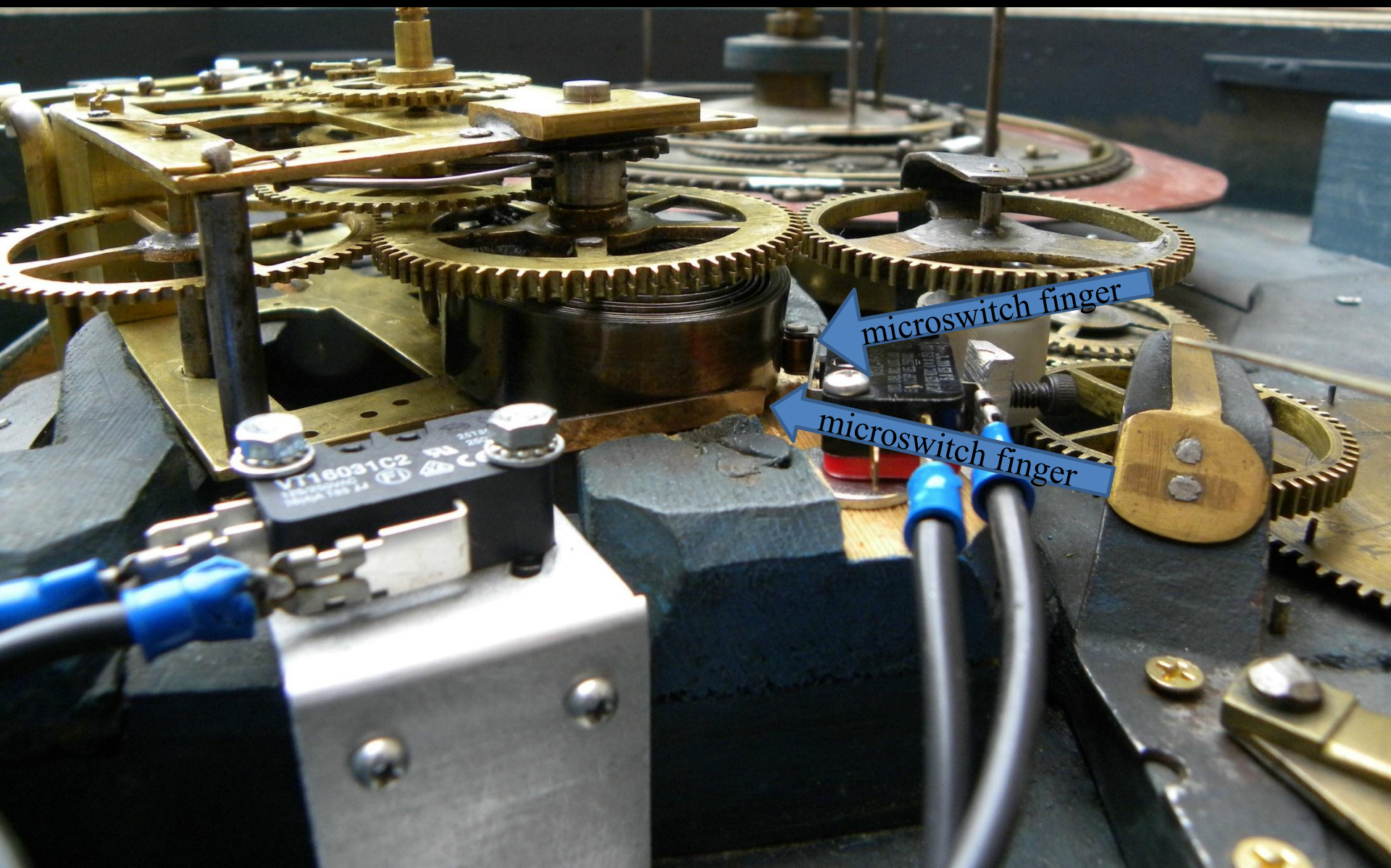
PHOTO SCALE



CM

IN

1 2 3 4 5
• • • • • mm



So

That's the story

Additional information:

1. www.calvin.edu/planetarium
2. “A Miniature Planetarium Powered by a Chauncey Jerome Chronometer,” *Watch and Clock Bulletin* (published by the National Association of Watch and Clock Collectors), **Vol. 55/4, No. 404**, 361 (July/August 2013)